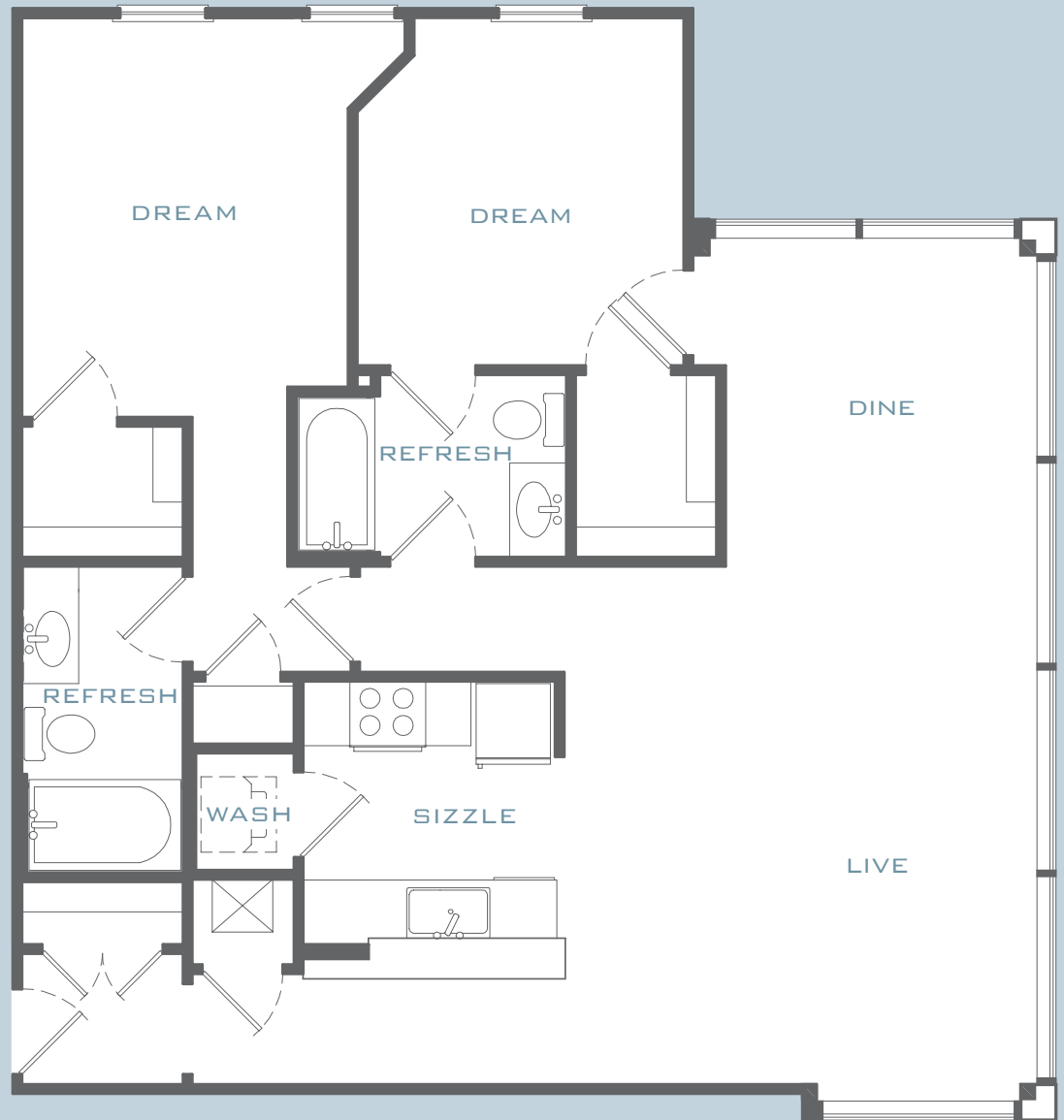




# SteelEleven

2 BED | 2 BATH | 1,151 SQ. FT.



Oral representations cannot be relied upon to correctly state the representations of the developer. For correct representations, make reference to the documents required by section 718.503 Florida Statutes, to be furnished by a developer to a buyer or lessee. All dimensions are approximate, and all floorplans and development plans are subject to change.

